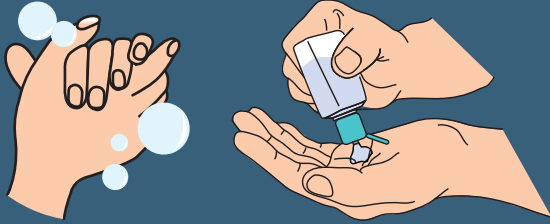


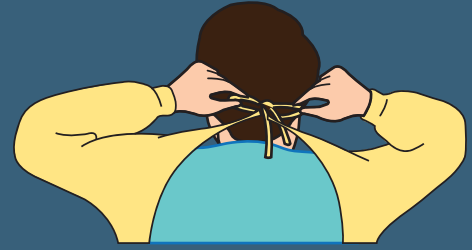
# 5 steps to Don (Put On) Personal Protective Equipment (PPE) For Droplet and Contact Precautions

## 1 HAND HYGIENE



- Clean all surfaces of hands and wrists.

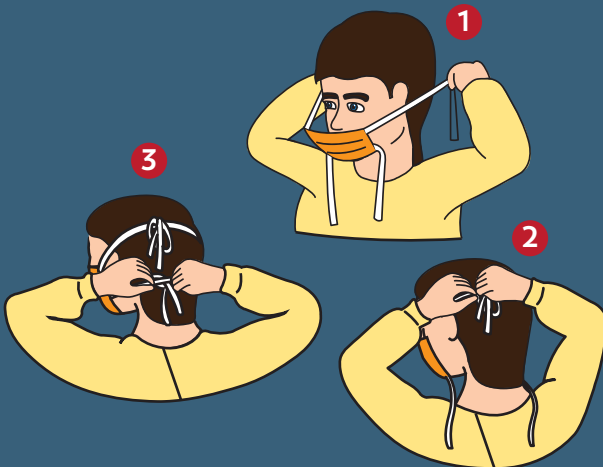
## 2 PUT ON GOWN



- Tie gown neck and waist ties securely.

## 3 PUT ON MASK

- Place mask over nose and under chin
- Secure ties, loops or straps
- Mould metal piece to your nose bridge
- For respirators, perform a seal-check



## 4 PUT ON PROTECTIVE EYEWEAR

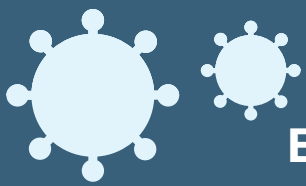
- Put on eye protection and adjust to fit
- Face shield should fit over brow



## 5 PUT ON GLOVES

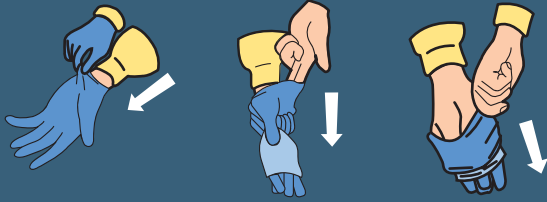
- Put on gloves, taking care not to tear or puncture the glove.
- If a gown is worn, the glove fits over the gown's cuff.
- Extend to cover wrist of gown





# 9 steps to Doff (Take Off) Personal Protective Equipment (PPE) For Droplet and Contact Precautions

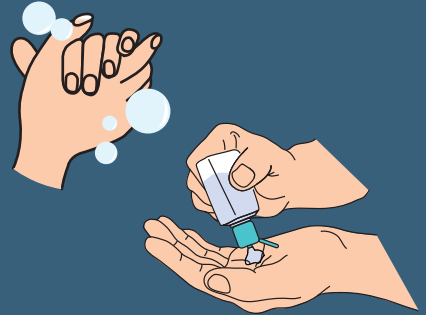
## 1 REMOVE GLOVES



- Remove gloves using a glove-to-glove/ skin-to-skin technique
- Grasp outside edge near the wrist and peel away, rolling the glove inside-out
- Reach under the second glove and peel away
- Discard immediately into waste receptacle

## 2 HAND HYGIENE

Clean all surfaces of hands and wrists.



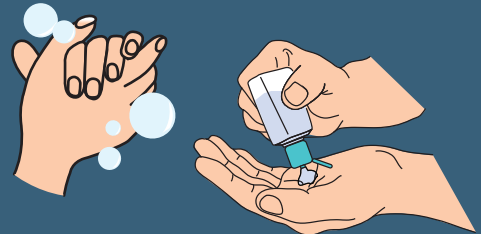
## 3 REMOVE GOWN



- Remove gown in a manner that prevents contamination of clothing or skin.
- Starting at the neck ties, the outer, 'contaminated', side of the gown is pulled forward and turned inward, rolled off the arms into a bundle, then discarded immediately in a manner that minimizes air disturbance.

## 4 HAND HYGIENE

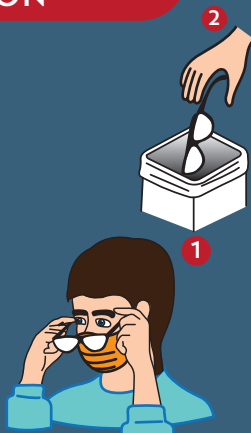
Clean all surfaces of hands and wrists.



If you are NOT 2 meters away from the resident, exit room now, perform hand hygiene and finish the remaining steps

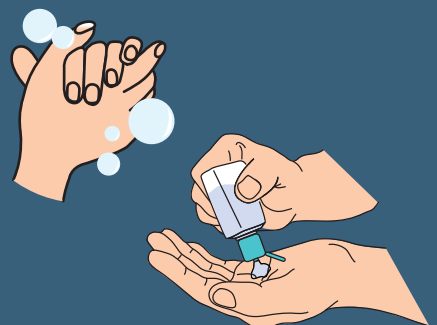
## 5 REMOVE EYE PROTECTION

- Arms of goggles and headband of face shields are considered to be 'clean' and may be touched with the hands.
- The front of goggles/face shield is considered to be contaminated.
- Remove eye protection by handling ear loops, sides or back only.
- Discard into waste receptacle or into appropriate container to be sent for reprocessing.



## 6 HAND HYGIENE

Clean all surfaces of hands and wrists.



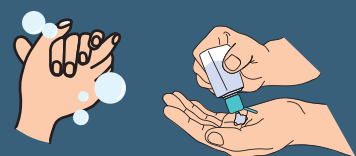
## 7 REMOVE MASK

- Ties/ear loops/straps are considered 'clean' and may be touched with hands.
- The front of the mask is considered to be contaminated.
- Untie bottom tie then top tie.
- Pull forward off the head, bending forward to allow mask to fall away from the face.
- Discard immediately into waste receptacle.



## 8 HAND HYGIENE

Clean all surfaces of hands and wrists.



## 9 EXIT ROOM

Exit room and perform hand hygiene.

