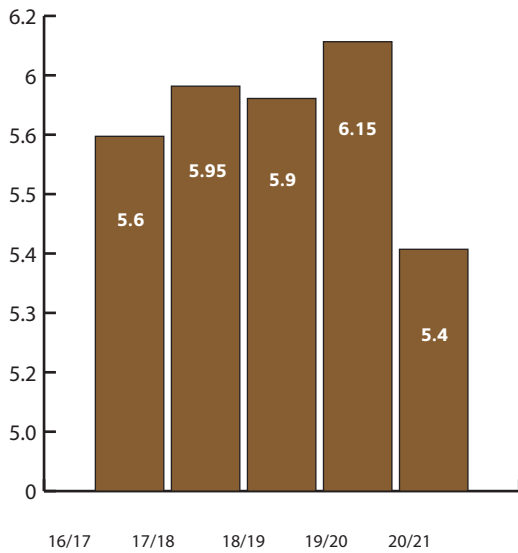


Resident Incident rates

(Responsive Behaviours, Falls, and Medication errors)

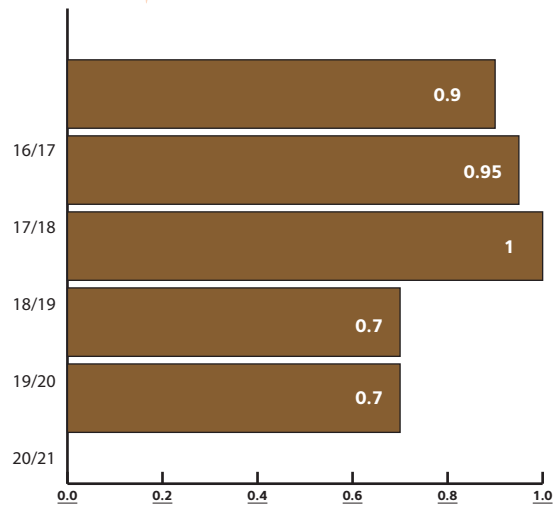
Northwood measures the incident rate by 1000 bed days, which is the population x number of days in quarter. It should be noted that one resident can account for multiple incidents.

Number Of Responsive Behaviours Per 1000 Bed Days



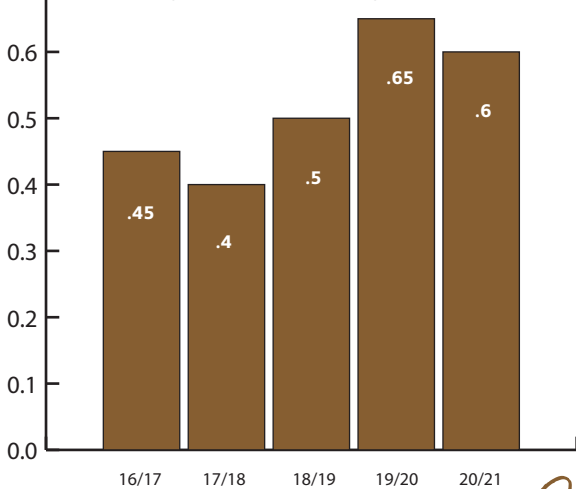
The rate for **responsive behaviours** over the last 5 years in LTC was 0.85 responsive behaviours per 1000 bed days.

Number Of Falls Per 1000 Bed Days



The rate for **falls** over the last 5 years in LTC was 5.8 falls per 1000 bed days.

The rate for **med errors** over the last 5 years in LTC was 0.52 med errors per 1000 bed days.



Number Of Med Errors Per 1000 Bed Days

Monitoring types of incidents demonstrates priorities for focus. Root cause analysis and a subsequent corrective action plan, if required, can significantly reduce the risk of injury resulting from repeat occurrences, or in the case of a near miss situation, can prevent a potential future incident from occurring.

Northwood